



CHARLES BARTLETT
RESIDENTIAL



8 Fleming Lodge Admiral Walk

, London, W9 3TE

£3,900 Per month



A stunning split level duplex luxury apartment offering more than 1236 sqft of accommodation. This property includes a secure underground parking space and membership to the prestigious Harbour Club gym.

The property comprises open plan living room/dining space, modern fitted kitchen with integrated appliances, two balconies with terrace style dining space, utility cupboard, master bedroom with ensuite bathroom, two further double bedrooms and a main bathroom.

Carlton Gate offers canal-front communal gardens and is within half a mile of multiple transport links and local amenities including Little Venice, Royal Oak and Westbourne Park.

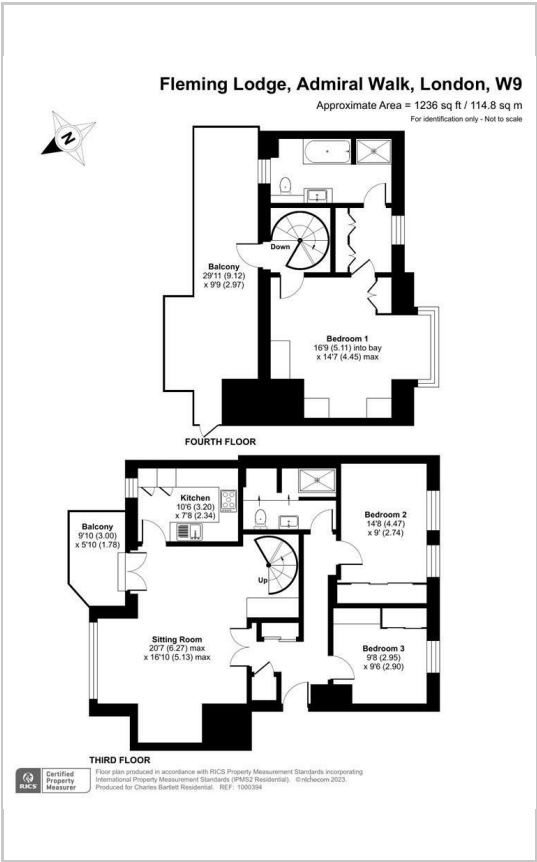
Available immediately
EPC Rating C
Council Tax Band G



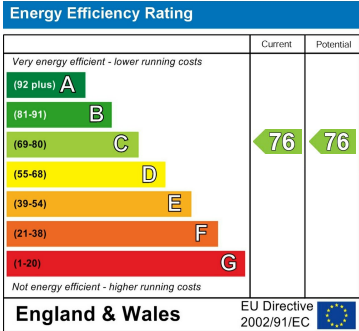
Area Map



Floor Plans



Energy Efficiency Graph



These particulars, whilst believed to be accurate are set out as a general outline only for guidance and do not constitute any part of an offer or contract. Intending purchasers should not rely on them as statements of representation of fact, but must satisfy themselves by inspection or otherwise as to their accuracy. No person in this firms employment has the authority to make or give any representation or warranty in respect of the property.

The Newt, Denchworth Manor Hyde Road, Denchworth, Oxford, OX12 0DX
 Tel: 07939 496551 Email: charles@charlesbartlett.co.uk www.charlesbartlett.co.uk