



CHARLES BARTLETT  
RESIDENTIAL



# 10 Grove End Road

St John's Wood, London, NW8 9LB

## £3,950 Per week

Welcome to this stunning six-bedroom family home located on Grove End Road in the prestigious area of St John's Wood, London NW8.

This detached house boasts 2 reception rooms, separate fully fitted kitchen/ breakfast room, 6 bedrooms and 4 bathrooms, providing ample space for comfortable living.

Spanning over 3,682 sq ft, this gated property offers privacy and security for you and your family. Garage and driveway parking for several vehicles ensures convenience in the bustling city of London.

One of the most exciting features of this property is its unique location, backing onto the iconic Lords Cricket Ground.

Don't miss the opportunity to rent this exceptional six bedroom family home in one of London's most sought-after neighbourhoods.

Contact us today to arrange a viewing and make this dream property your new home.

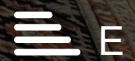
EPC Rating E  
Council Tax- Band H (Westminster City)  
Non-refundable holding deposit £3950.00

- Video Tour Available
- Six Bedroom Property
- Two Receptions
- Hallway
- Four bathrooms
- Fitted kitchen/ breakfast room
- Gated Driveway with parking for three vehicles
- Private rear garden
- Available immediately
- Un-furnished

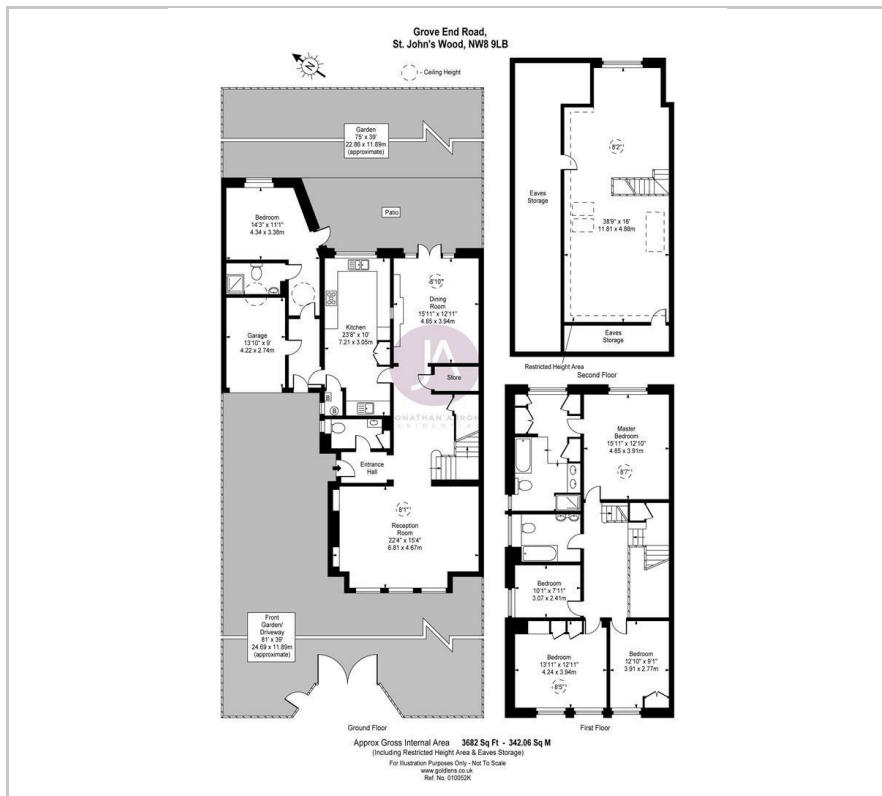
### Viewing

Please contact our Charles Bartlett Residential Office on 07939 496551

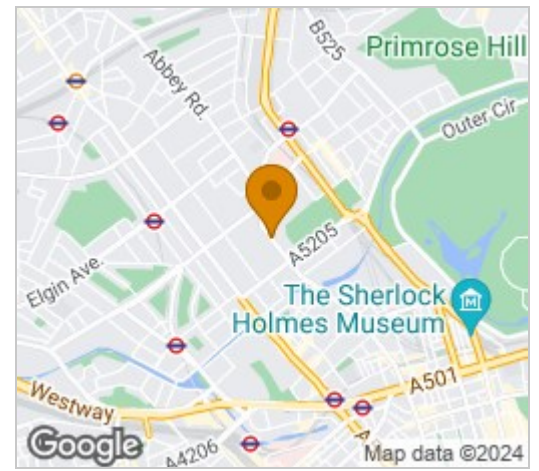
if you wish to arrange a viewing appointment for this property or require further information



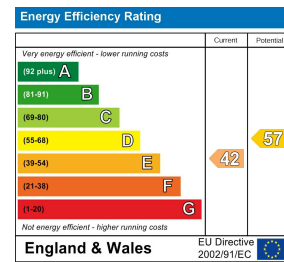
# Floor Plan



# Area Map



# Energy Efficiency Graph



These particulars, whilst believed to be accurate are set out as a general outline only for guidance and do not constitute any part of an offer or contract. Intending purchasers should not rely on them as statements of representation of fact, but must satisfy themselves by inspection or otherwise as to their accuracy. No person in this firm's employment has the authority to make or give any representation or warranty in respect of the property.